

The logo features a dark blue silhouette of a gabled roof above the company name. The text is in a bold, sans-serif font.

MASTERPLAST
GROUP-INTERNATIONAL

www.masterplastgroup.com

DRY BUILDING

DRY CONSTRUCTION SYSTEM ELEMENTS, PROFILES AND ACCESSORIES

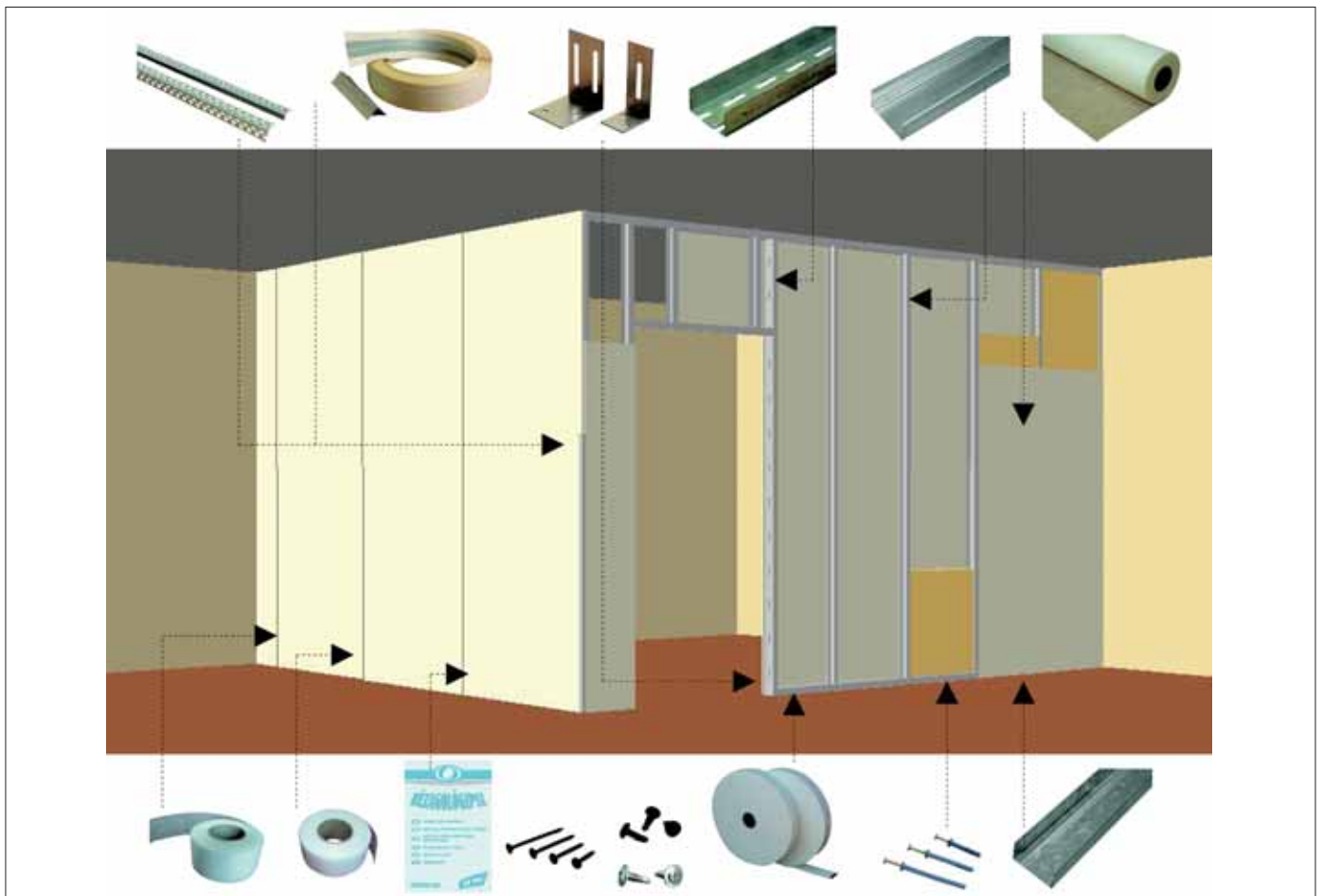
GENERAL INFORMATION

Fields of application:

MASTERPLAST offers a wide range of products and materials for gypsum plasterboards systems. These products include the supporting, fastening elements and their accessories, thermal and sound insulating materials of non load bearing partitions, suspended ceilings, dry lining finishes and claddings. These structures can satisfy aesthetic, fire protective, thermal- and sound isolating requirements as well.

Curtain walls:

The horizontal (UW) and vertical (CW) support profiles for gypsum-board curtain walls are made in standard 50, 75. The UW and CW metal framing components as the supporting parts of non load bearing partitions are made with the standard web width of 50 mm, 75 mm and 100 mm and serve for the connection of the CW studs of the plasterboard partition wall to the load bearing structure. The UW profiles can be fastened horizontally to the floor or to the ceiling by hammer fixed expansion dowel (~80 cm from each other), onto a solid, dry and frost-free base.



For flexible connection and reducing of the impact sound, a self-adhesive foam tape is necessary to be stuck onto the profile. The vertically positioned CW profiles (without fixing to the UW profiles, except at corners, intersections or next to doors) serve as supporting structure and base for fastening of gypsum plasterboards. The distance of these studs from each other is generally 600 mm or 625 mm – depending on the width of the gypsum plasterboards. In consideration of higher wall structure, higher load or due to the function an even thicker positioning of the CW profiles can be necessary.

The enhanced sound- and thermal insulation of partitions can be achieved by mineral wool insulating materials, placed between the CW profiles with the complete filling of the spaces. Types of the applicable insulations are detailed in the catalogue of “Heat and sound insulation” issued by MASTERPLAST.

The gypsum plasterboards are fixed to the supporting structure with half board shifting on the two side of the wall (the lining is started with a whole board (width of 120 or 125 cm) on one side and with a half board (width of 60 or 62.5 cm) on the other side). The boards are fastened by drywall screws, which minimum fastening depth is 10 mm in metal structure and at least 20 mm in timber batten. Fastening distance on vertical surfaces is maximum 25 cm, on horizontal or on bevelled surface (e.g. in built-in roof) is maximum 17 cm and the boards must be pushed to the profiles during fixing. In order to avoid unnecessary stress of the boards, they should be screwed from the middle towards the edges. The head of the screws should be driven deeper than the board surface.

Material demand of partitions (metal framing, 2×1 layer of gypsum board [1m²])

- 2 m² gypsum plasterboard, (min. thickness: 12.5 mm)
- 0.8 m UW profile
- 2 m CW profile
- 1.3 m foam tape
- 26 pcs drywall screws (25 mm)
- 1.8 pcs hammer fixed expansion dowel (Ø6 mm/40 mm)
- 0.6 kg joint filler gypsum
- 3.2 m glassveil tape for joint reinforcement
- 1 m² Isover AKUSTO
- (edge protection – ALUX edge protection)

Suspended ceilings and built-in roofs:

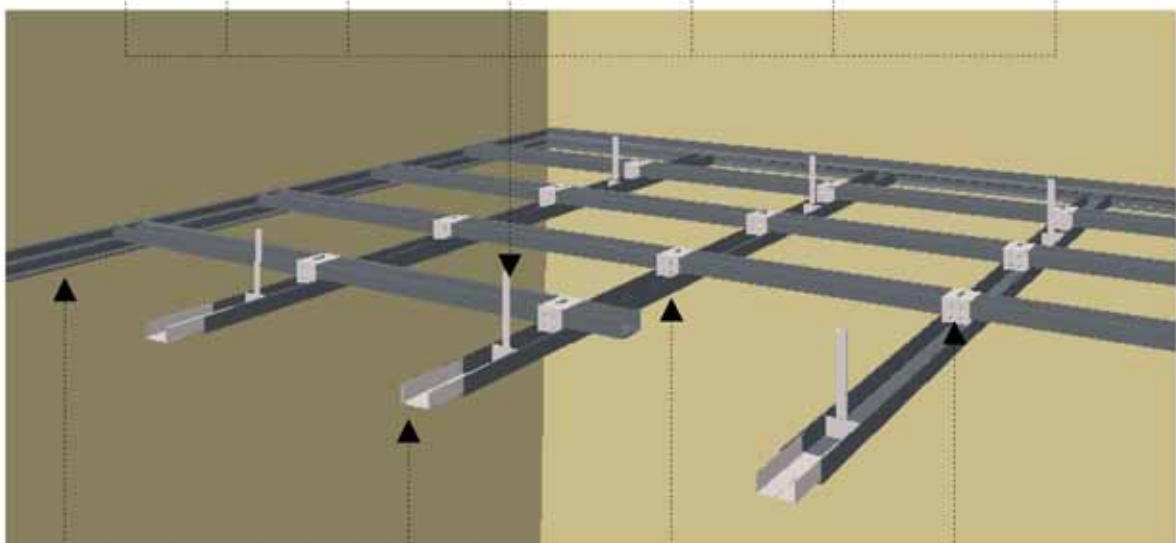
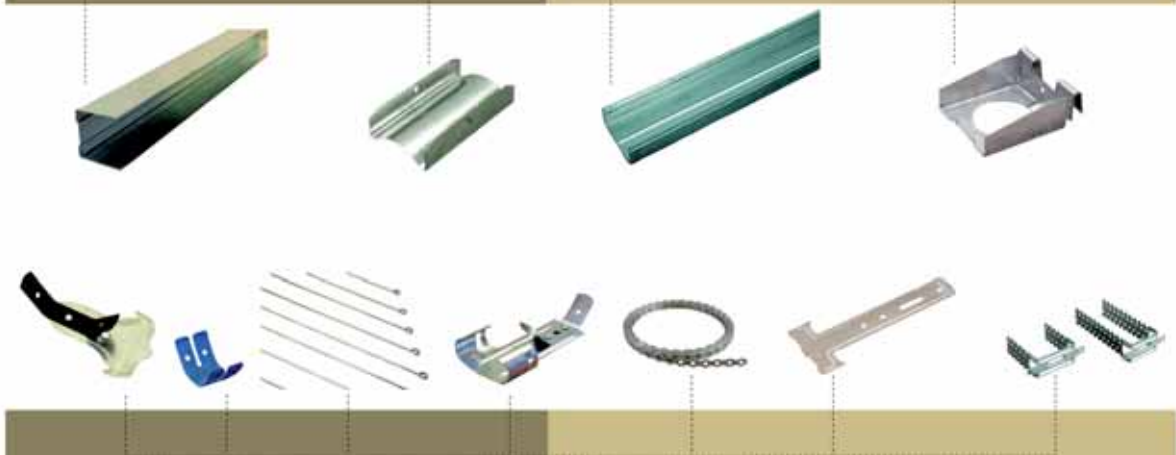
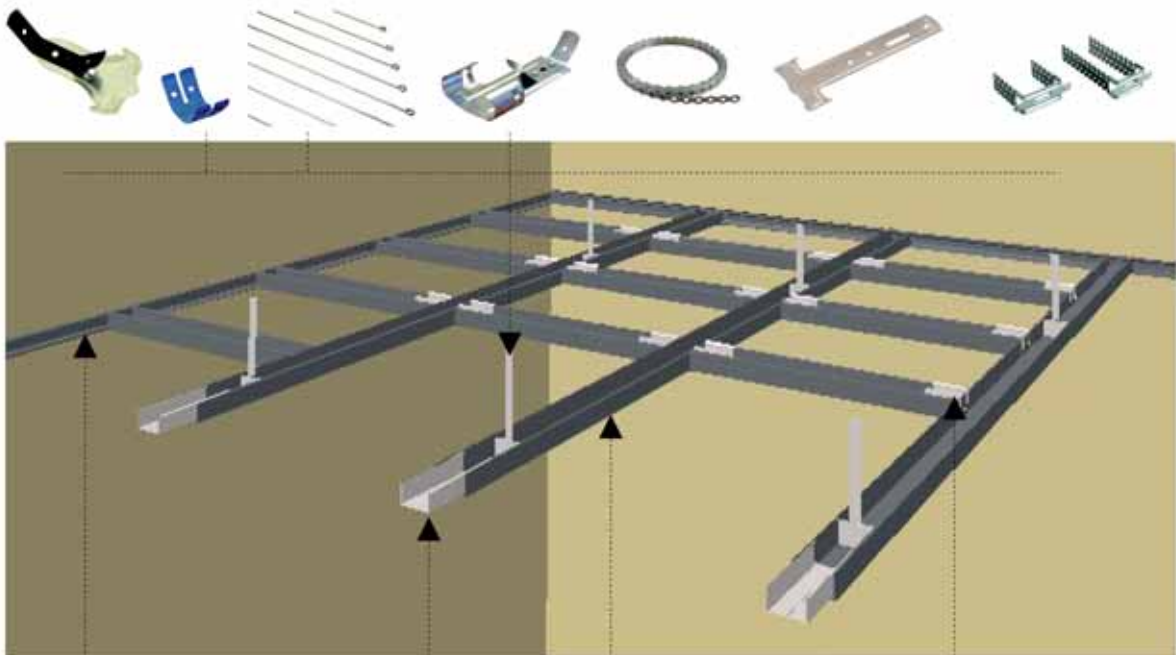
Advantages of use

- Reducing the height of inner space = saving on heating costs
- Cadding of wires, engineering pipes and venting channels
- Improvement of airborne sound insulation of the structures
- Improvement of fire resistance of the structure

Suspended ceiling or linings in built in roofs may be fixed on wood or metal supporting. In case of timber structure, the battens must be properly dried and straight without imperfections. The metal frame consists of CD ceiling profiles and UD profiles. Their fixing to the ceiling can be made with direct hangers or flexible direct bracket at small fixing distances (maximum distance of the surface of the lining and the load-bearing structure is maximum 15 cm) or in case of bigger fixing distances with suspending wires, nonius hanger secured with adjusting clamp. If fire-resistance must be minimum 90 minutes or the structure is increasingly loaded (load>25 kg/m²) only nonius hanging is applicable. When the suspended ceiling is located between heated and non-heated spaces, vapour barrier layer must be installed on the heated side. Types of the applicable vapour barriers are detailed in the catalogue of “Roofing” issued by MASTERPLAST.

DRY BUILDING

4 MASTERPLAST GROUP INTERNATIONAL



Material demand of suspended ceiling (metal framing, 1 layer of gypsum plasterboard [1 m²])

- 1 m² gypsum plasterboard (min. thickness: 12.5 mm)
- 4 m CD 60/27 profile
- 1.3 mm foam tape (30 mm)
- 20 pcs drywall screws (25 mm)
- 1.6 pcs pcs hammer fixed expansion dowel (Ø6 mm/40 mm)
- 1.6 pcs ceiling wedge anchor (Ø6 mm/40 mm)
- 1.6 pcs hanging profile (CD hanger or CD hanger with special spring)
- 3 pcs CD cross-connector
- 0.5 pcs CD profile connector
- 1.6 pcs suspension wire
- 0.3 kg joint filler gypsum
- 1.6 m glassveil tape for joint reinforcement
- 1 m² mineral wool insulation (depending on the sound or heat insulation demand)
- PE foil 0.5 mm

Material demand in built-in room (timber support, 1 layer of gypsum plasterboard [1 m²])

- 1 m² gypsum plasterboard (min. thickness: 12.5 mm)
- 6 pcs direct hangers
- 29 pcs drywall screws (35 mm)
- 12 pcs drywall screws (45 mm)
- 0.3 kg joint filler gypsum
- 1.6 m glassveil tape for joint reinforcement
- 1 m² vapour-control layer
- 1 m² mineral wool insulation (minimum 15+5 cm Isover DOMO)
- ALUX edge protection

Cladding to structural walls, columns, beams:

Claddings can be fixed by direct hanger or flexible direct bracket directly to the load bearing wall, mounted for a timber support or for metal framing made of UD and CD profiles. The other type of claddings is a partition (made of UW and CW profiles), but only with boarding on one side. The gypsum plasterboard or other covering is fastened to the support on the same way as on partitions.

Typical cases of the application of claddings:

- hiding of engineering, if the thickness of the partition is not enough to hide the equipments,
- acoustic aspects, to improve the sound isolation of existing walls,
- hiding of non aesthetic walls or surfaces.

Dry plasters:

Dry lining finishing is used to replace traditional lime or cement plaster, fixed by adhesive gypsum to the load bearing wall, the joints are filled with joint filler gypsum. If the base surface is not evenly absorbing (e.g. existing porous plaster), the whole surface should be treated with MASTERFIX® PRIMER (diluted in proportion 1:1) before bonding. The applied boards should be the same high than the inner place, but 10-10 mm of gap must be left along the floor and the ceiling forming a ventilation gap for bonding of the adhesive gypsum.

Advantages of the application:

- it can be built very fast,
- there is no need waiting for the drying of the plaster.
- electronic cables can be led (until Ø16 mm) behind the board covering, without grooving and repairing of the walls.
- the gypsum plaster controls the vapour content of the rooms.

Finishing works of dry constructions:

Jointing:

Conditions: closed façade, room without ventilation, completed concrete base. Dry and undusted boards and joints, the temperature is above +5°C (on the surfaces as well).

Materials: Joint filler gypsum (applicable ~30 minutes)
Glassveil, self-adhesive fiberglass or paper tape or for joint reinforcement or

Work phases: Mixing of gypsum (~30 kg for 100 m² surface)
Joint filling, bedding of the reinforcement strip
Smoothing of the jointings, repairing of screw heads, polishing of the joint surfaces

Edge protection:

Conditions: closed façade, room without ventilation, completed concrete base. Dry and undusted boards and joints, the temperature is above +5°C (on the surfaces as well).

Materials: Joint filler gypsum (applicable ~30 minutes)
ALU corner bead
Edge protection PVC profile or PVC arch form profile
ALUX edge protection

Work phases: Mixing of gypsum
Bonding of the profiles
Smoothing of the edges

Icons



To be kept indoors, in a dry place, protected from rain



Fragile



CE sign



Protected from sun and radiating heat



Technical and Safety Data Sheet

METAL FRAMING COMPONENTS FOR GYPSUM PLASTERBOARD WALLS

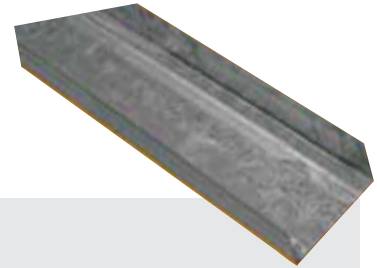
MASTERPLAST GROUP INTERNATIONAL 7

MASTERPROFIL DIN UW-50, 75 and 100 profiles

Material: Hot-dip coated steel

Field of application: for the connection of the CW profiles of the plasterboard partition wall to the floor and ceiling.

Installation: The profile can be fastened horizontally to the floor or to the ceiling by hammer fixed expansion dowel (~80 cm from each other). For flexible connection and reducing of the impact sound, a self-adhesive foam tape is necessary to be stuck onto the profile



UW profile	UW-50	UW-75	UW-100
Code:	0761-05040020	0761-07540016	0761-10040012
Length of profile (in cm):	400	400	400
Pcs/bundle	20	16	12

MASTERPROFIL DIN CW-50, 75 and 100 profiles

Material: Hot-dip coated steel

Field of application: Vertically positioned studs of partitions for the fastening of gypsum plasterboards.

Installation: The CW profiles must be placed in the preliminarily installed UW profiles (without fixing them to the UW profiles, except at corners, intersections or next to doors).

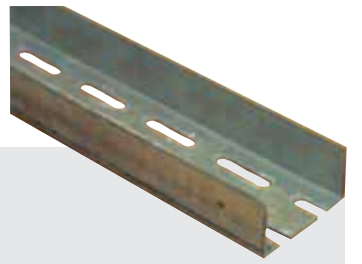


CW Profile	CW-50	CW-75	CW-100
260 cm long	0762-05026008	0762-07526008	0762-10026008
275 cm long	0762-05027020	0762-07527016	0762-10027012
300 cm long	0762-05030020	0762-07530016	0762-10030012
350 cm long	0762-05035020	0762-07535016	0762-10035012
400 cm long	0762-05040020	0762-07540016	0762-10040012
Pcs/bundle	20	16	12

MASTERPROFIL UA-50, UA-75, UA-100 profile (rigid stud)

Material: 2 mm thick hot-dip coated steel.

Application: Vertically positioned studs of partitions next to doors (when the height of the wall >2.60 m and/or the width of the door >90 cm, the weight of the door leaf >25 kg) or at the free end of partitions.



UA Profile code	UA-50	UA-75	UA-100
300 cm long	0703-05030004	0703-07530004	0703-01030004
350 cm long	0703-05035004	0703-07535004	0703-01035004
400 cm long	–	0703-07540004	0703-01040004*
450 cm long	–	–	0703-01045004*
Pcs/bundle	4	4	4

* only for order!

Foam tape

Material: Polyurethane, self-adhesive at one side

Application: Applied on the UD profile (according to their width) for reducing of the impact sound and for flexible connection.

Available: In 30 m rolls



Foam tape	Code
30 mm wide	0718-03000000
45 mm wide	0718-05000000
70 mm wide	0718-07000000
95 mm wide	0718-09500000

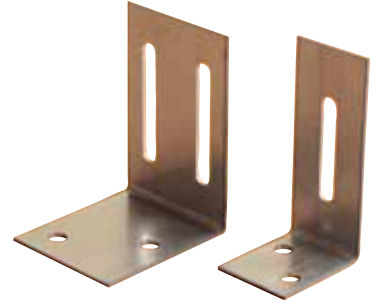
FASTENINGS FOR GYPSUM PLASTERBOARD STRUCTURES (dowels, screws)

8 MASTERPLAST GROUP INTERNATIONAL

Fixing angle for UA profile (rigid stud)

Material: 2 mm thick, bended hot-dip coated steel.

Application: It serves for the fastening of UA profiles (rigid stud) to the floor and ceiling, with the measure according to the web width of the UA profile. Fixing to the UA profile is through the elongated perforations.



Fixing angle	100x50x45	100x75x65
Code	0719-05045000	0719-07565000



Hammer fixed expansion dowel

Material: Polypropylene sleeve with steel nail

Application: For the fastening of UW profile into the floor or ceiling and UD profile to the wall.

Sizes: Sleeve: Ø6 mm, with different lengths (40–60–80 mm).

Rules of installation: Anchorage depth: min. 35 mm in solid brick or concrete, min. 45 mm in hollow brick (cavity brick.)



Available	6x40	6x60	6x80
100 pcs/box	–	–	0717-68001000
200 pcs/box	0717-64002000	0717-66002000	–



Coarse thread drywall screws for wood

Material: black phosphated low-carbon steel

Application: For fastening of gypsum plasterboards or cement chipboards to the wooden substructure, battens.

Installation: Fastening distance on vertical surface is maximum 25 cm, on horizontal or on bevelled surface (e.g. in built-in roof) is maximum 17 cm; fastening depth is minimum 20 mm.



drywall screws for wood	3.5x35	3.5x45	3.5x55	4.2x75	4.2x90
1000 pcs/box	0713-23510000	–	–	–	–
500 pcs/box	–	0713-24505000	0713-25505000	–	–
250 pcs/box	–	–	–	0713-27525000	–
200 pcs/box	0713-23502000	–	–	–	0713-29020000
100 pcs/box	–	0713-24501000	–	–	–



FASTENINGS FOR GYPSUM PLASTERBOARD STRUCTURES (dowels, screws)

Fine thread drywall screws for metal

Material: black phosphated low-carbon steel

Application: For fastening of gypsum plasterboards or cement chipboards to CW or CD profiles

Installation: Fastening distance on vertical surface is maximum 25 cm, on horizontal or on bevelled surface (e.g. in built-in roof) is maximum 17 cm; fastening depth is minimum 10 mm.



Drywall screws for metal	3.5x25	3.5x35	3.5x45	3.5x55
1000 pcs/box	0713-12510000	0713-13510000	–	–
500 pcs/box	–	–	0713-14505000	0713-15505000
200 pcs/box	0713-12502000	0713-13502000	–	–



Self-drilling drywall screws for UA profile (rigid stud)

Material: black phosphated low-carbon steel

Application: For fastening of gypsum plasterboards or cement chipboards to UA profile (rigid stud)

Installation: Fastening distance on vertical surface is maximum 25 cm, on horizontal or on bevelled surface (e.g. in built-in roof) is maximum 17 cm; fastening depth is minimum 10 mm.



Self-drilling screws for rigid stud	3.5x25	3.5x35
1000 pcs/box	0713-32510000	0713-33510000
200 pcs/box	0713-32502000	0713-33502000
100 pcs/box	–	0713-33501000



Self-drilling screw for steel framing

Material: black phosphated low-carbon steel

Application: For the fastening of metal framing profiles to each other



Self-tapping screw for profile connections	3.9x9.5
1000 pieces/box	0713-49510000



Self-drilling screw for steel framing

Material: corrosion resistant metal alloy

Application: For the fastening of metal framing profiles to each other



Self-tapping screw for profile connections	4.2x14
1000 pieces/box	0713-41410000



METAL FRAMING COMPONENTS FOR SUSPENDED CEILINGS

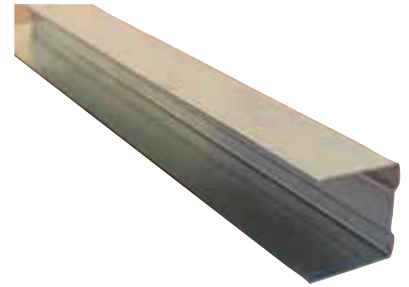
10 MASTERPLAST GROUP INTERNATIONAL

MASTERPROFIL DIN UD-27

Material: Hot-dip coated steel (27 mm×28 mm×27 mm)

Application: For the connection of the CD profiles of the suspended ceiling or linings structure to the walls.

Installation: The profile can be fastened horizontally by hammer fixed expansion dowel in case of concrete or hollow brick wall or by self-drilling screw to metal structure (~50 cm from each other). For flexible connection and reducing of the impact sound, a self-adhesive foam tape is necessary to be stuck onto the profile.



UD Profile	UD-27	UD-27
Code:	0764-U3020020	0764-U4020020
Length of profile (in cm)	300	400
Pcs/bundle	20	20



MASTERPROFIL DIN CD-60

Material: Hot-dip coated steel (60 mm×27 mm×60 mm)

Application: Intended to be used as board rail and/or main rail in suspended ceiling or wall lining structures.

Installation: Positioned diagonally above to each other at the same level or at a distance from the load-bearing structure (hung by a suspension or fixed directly).



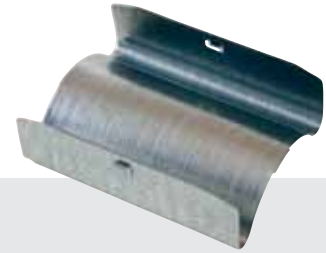
CD Profile	CD
300 cm long	0765-C3016016
400 cm long	0765-C4016016
Pcs/bundle	16



CD Profile connector

Application: For lengthwise connecting of the CD profiles

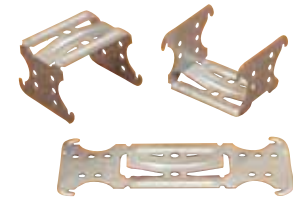
Installation: The CD profiles must be pushed until collision (middle of the profile connector), then fastened with screws.



	Available	Code
CD Profile connector	100 pcs/box	0711-1000000

CD Cross connector

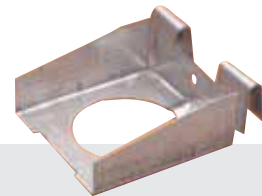
Application: For connecting of the crossed CD profiles in two-level supporting constructions of suspended ceilings.



	Available	Code
CD Cross connector	100 pcs/box	0709-10001000

CD Safety cross-connector

Application: For transverse connecting of the CD profiles on the same level.



	Available	Code
CD Safety cross connector	100 pcs/box	0710-10000000

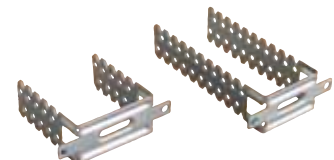
Direct hanger

Material: For connecting of "CD" profiles directly with the load bearing structure (if there are not acoustic requirements).

Types: For wooden battens: 50/75 mm or 50/125 mm

For CD profiles of 60/75 mm or 60/125 mm

Quantity: 2.5 pcs/m²

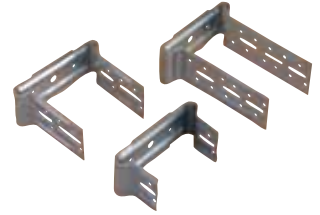


	Available	Code
Direct hanger 50/75	100 pcs/box	0706-50075000
Direct hanger 50/125	100 pcs/box	0706-50125000
Direct hanger 60/75	100 pcs/box	0706-60075000
Direct hanger 50/125	100 pcs/box	0706-60125000

Flexible Direct Bracket

Material: For connecting of "CD" profiles directly with the load bearing structure (if there are acoustic requirements).

Types: 60 mm width with three installation depths: 30-60 mm
60-90 mm
90-120 mm



Flexible Direct Bracket	Available	Code
30-60 mm	100 pcs/box	0720-06030000
60-90 mm	100 pcs/box	0720-06060000
90-120 mm	100 pcs/box	0720-06090000



Timber Connector

Application: For direct connecting of CD profiles with timber load bearing constructions.



	Code
Timber Connector	0708-21001000



Suspension band

Material: For the vertical suspension of suspended ceilings or cable channels.

Load bearing capacity: H4: up to 100 kg
H6: up to 150 kg



	Available	Code
Suspension band H4	10 m/roll	0712-H4010000
Suspension band H6	10 m/roll	0712-H6010000



CD Hanger

Application: For connecting of the CD profiles (suspended ceiling supporting structure) with suspension wires.

Installation: Maximum distance of the suspension points: 900x1000 mm grid

Load capacity: Max. 15 kg/piece (e.g. 1 layer of 12.5 mm thick gypsum plasterboard + 10 cm glass wool felt)



	Available	Code
CD hanger	100 pcs/box	0708-20001000



Hanger with tension spring for suspension of timber construction

Application: For connecting of the batten supporting structure with suspension wires, when its distance from the load bearing structure is bigger than 15cm.



Code

Hanger with tension spring for suspension of timber construction 0708-31001000



Hanger with tension spring for "T"- support rail

Application: For connecting of the modular suspended ceilings supporting structure with suspension wires to the load bearing structure.



Code

Hanger with tension spring for "T"- support rail 0708-30001000



CD hanger with special spring

Application: For connecting of the CD profile (suspended ceiling supporting structure) with suspension wires

Load capacity: Max. 25 kg/pc (e.g. in case of 2 layers of 12.5 mm gypsum plasterboard or stone wool insulation).

Installation: Maximum distance of the suspension points: 850x750 mm grid.



Code

CD hanger with special spring 100 pcs/box 0708-10001000



Suspension Wires 125-2000 mm

Application: For connecting of hangers with the load bearing structuring



Length:

Code

125 mm	0707-10125000
250 mm	0707-10250000
375 mm	0707-10375000
500 mm	0707-10500000
750 mm	0707-10750000
1000 mm	0707-11000000
1500 mm	0707-11500000
2000 mm	0707-12000000



Double spring securing clip

Application: Self-locking spring clip for the lengthening of suspension wires.



	Available	Code
Double spring securing clip	100 pcs/box	0708-40001000



JOINTING AND SURFACE-FINISHING MATERIALS FOR GYPSUM PLASTERBOARD STRUCTURES

Glassveil tape for joint reinforcement

Application: For embedding in the bedding compound to reinforce the joints of gypsum plasterboards for preventing of crackings (in case of normal stress)

Installation: Embedded in the bedding compound and covered with one or more layer of finishing compound



	Available	Code
Glassveil tape for joint reinforcement	5 cm×25 m/roll, 40 pcs/box	0715-25A40000



Self-adhesive fiberglass tape for joint reinforcement

Application: For the reinforcing of the joints of gypsum plasterboards for preventing of crackings (in case of normal stress).

Installation: Stuck at the joints of plasterboards and covered with one or more layer of finishing compound.



Fiberglass tape for joint reinforcement	Available	Code
5 cm wide, 20 m long roll	72 pcs/box	0714-20A72000
5 cm wide, 45 m long roll	54 pcs/box	0714-45A54000
5 cm wide, 90 m long roll	24 pcs/box	0714-90A24000



MASTERMAT Glassveil

Application: For the reinforcing of the surface of gypsum plasterboard walls for preventing of crackings (in case of increased stress) and also covers smaller damages, provides the surface with increased impact-resistance.

Installation: On the total surface with adhesive used for fibre glass wallpapers.



	Available	Code
Glassveil 1 m-A	1 m×50 m=50 m ² /roll	0715-0A500000

Joint filler gypsum

Application: Premixed gypsum compound for filling and finishing of the joints formed at the edges and ends of the gypsum plasterboards.

Coverage: ~300 g/m²

Installation: The joint filler gypsum must be added to the water in the required proportion and stirred thoroughly. After ~3-5 minute "resting" of the compound, it should be stirred again. Depending on the temperature of the room and the surface, it can be used for 60-80 minutes. Not to add any gypsum or water to the mixed material afterwards.

Storage, expiry date: It has to be stored on pallets, protected from wetness. In case of the prescribed storage and handling conditions, the expiry date of the product is 6 month after production.



Joint filler gypsum	Available	Code
	5 kg	0715-32005000
	25 kg	0715-32025000

Internal putty gypsum

Application: Premixed gypsum compound for plastering of walls and ceilings inside buildings as finishing material which can be decorated.

Installation: The gypsum must be added to the water in the required proportion and stirred thoroughly. After ~3-5 minute "resting" of the compound, it should be stirred again. Depending on the temperature of the room and the surface, it can be used for 60-80 minutes. Not to add any gypsum or water to the mixed material afterwards.

Storage, expiry date: It has to be stored on pallets, protected from wetness. In case of the prescribed storage and handling conditions, the expiry date of the product is 6 month after production.



Internal putty gypsum	Available	Code
	15 kg	0715-33015000
	25 kg	0715-33025000

JOINTING AND SURFACE-FINISHING MATERIALS FOR GYPSUM PLASTERBOARD STRUCTURES

16 MASTERPLAST GROUP INTERNATIONAL

Internal adhesive gypsum

Application: Premixed gypsum compound for bonding of gypsum plasterboards to the wall (dry wall plastering) or for bonding of gypsum blocks.

Coverage: For dry wall plastering 4.5–5 kg/m², for bonding of plasterboards: 2.5 kg/m².

Installation: The gypsum must be added to the water in the required proportion and stirred thoroughly. After ~3-5 minute "resting" of the compound, it should be stirred again. Depending on the temperature of the room and the surface, it can be used for ~30 minutes. Not to add any gypsum or water to the mixed material afterwards.

Storage, expiry date: It has to be stored on pallets, protected from wetness. In case of the prescribed storage and handling conditions, the expiry date of the product is 6 month after production



	Available	Code
Internal adhesive gypsum	25 kg	0715-31025000



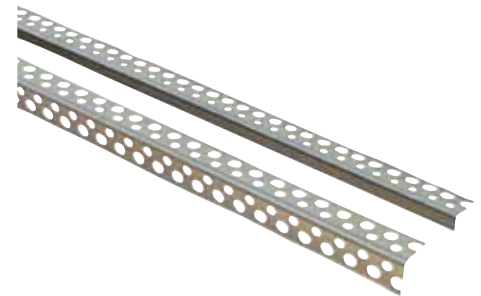
EDGE PROTECTION MATERIALS FOR GYPSUM BOARD STRUCTURES



ALU corner bead for jointing

Material: Aluminium

Application: For the mechanical protection of gypsum plasterboard partitions, embedded in the jointing or finishing gypsum layer, it improves the protection and mechanical resistance of the corners.



Length	Available	Code
MASTERPROFIL® ALU 12×24 2 m	2 m×50 pcs=100 m/bundle	0104-12200100
MASTERPROFIL® ALU 12×24 2.5 m	2.5 m×50 pcs=125 m/bundle	0104-12250125
MASTERPROFIL® ALU 12×24 3 m	3 m×50 pcs=150 m/bundle	0104-12300150
MASTERPROFIL® ALU 24×24 2 m	2 m×50 pcs=100 m/bundle	0104-24200100
MASTERPROFIL® ALU 24×24 2.5 m	2.5 m×50 pcs=125 m/bundle	0104-24250125
MASTERPROFIL® ALU 24×24 3 m	3 m×50 pcs=150 m/bundle	0104-24300150
MASTERPROFIL® ALU-L 2 m	2 m×50 pcs=100 m/bundle	0104-20200100
MASTERPROFIL® ALU-L 2.5 m	2.5 m×50 pcs=125 m/bundle	0104-20250125
MASTERPROFIL® ALU-L 3 m	3 m×50 pcs=150 m/bundle	0104-20300150
MASTERPROFIL® ALU 135° 2 m	2 m×50 pcs=100 m/bundle	0104-35200100
MASTERPROFIL® ALU 135° 2.5 m	2.5 m×50 pcs=125 m/bundle	0104-35250125
MASTERPROFIL® ALU 135° 3 m	3 m×50 pcs=150 m/bundle	0104-35300150



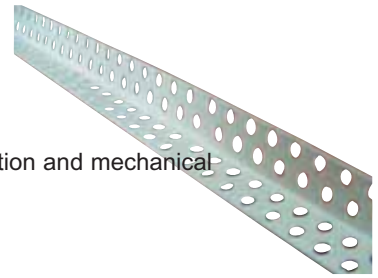
EDGE PROTECTION MATERIALS FOR GYPSUM BOARD STRUCTURES



Edge protection PVC profile

Material: PVC

Application: embedded in the jointing or finishing gypsum layer, it improves the protection and mechanical resistance of the corners.



Length	Available	Code
MASTERPROFIL® PVC 2.5 m	2.5 m×20 pcs=50 m/bundle	0106-00250000



PVC-FLEX Arch form profile

Material: PVC

Application: embedded in the jointing or finishing gypsum layer, improves the protection and mechanical resistance of curved edges (e.g. arches).



Length	Available	Code
2.5 m	2.5 m×20 pcs=50 m/bundle	0108-00250000



ALUX edge protection

Application: For the mechanical protection of gypsum plasterboard partitions, embedded in the jointing or finishing gypsum layer, it improves the protection and mechanical resistance of the corners.



	Available	Code
ALUX edge protection	30 m	0721-0030A000



EDGE PROTECTION MATERIALS FOR GYPSUM BOARD STRUCTURES

18 MASTERPLAST GROUP INTERNATIONAL

Holding "U" profile

Material: white PVC

Application: Auxiliary profile for connecting of gypsum plasterboards with other structures. It is applicable at the connection of suspended ceilings and walls, at the visible connection of partitions next to windows or at expansion joints.

Size: According to the width of gypsum pasterboards (9mm or 12.5mm)

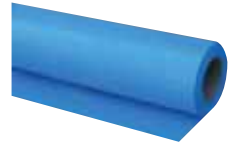


Holding U profile	Available	Code
9.5 mm wide	In boxes, 2.5 m×20 pcs/ box	0716-09500000
12.5 mm wide	In boxes, 2.5 m×20 pcs / box	0716-12500000

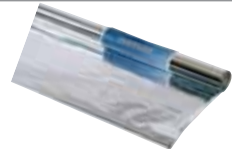


Vapour barriers

MASTERFOL BLUE S_d20
www.masterplastgroup.com



ISOFLEX ALU-PZ
www.masterplastgroup.com



ISOFLEX ALU-LP
www.masterplastgroup.com



ISOFLEX TAPE Self-adhesive
aluminium-covered tape
www.masterplastgroup.com



HEAT AND SOUND INSULATION

- **ISOVER AKUSTO (partition)**
- **ISOVER PIANO (partition)**
- **ISOVER ROLLINO (partition)**
- **ISOVER UNIROLL (suspended ceiling - loft)**
- **ISOVER QUATTRO (suspended ceiling - loft)**
- **NOBASIL MPN (M30)**

For further information and downloads,
please visit to our website

www.masterplastgroup.com



MASTERPLAST GROUP INTERNATIONAL

MASTERPLAST Group Zrt.

8143 Sárszentmihály, Árpád u. 1/a, Hungary
Phone: +36-22-801-300, Fax.: +36-22-801-382
E-mail: masterplast@masterplast.hu

MASTERPLAST Kft.

8143 Sárszentmihály, Árpád u. 1/a., Hungary
Phone: +36-22-801-300
Fax: +36-22-801-382
E-mail: masterplast@masterplast.hu

MASTERPLAST România s.r.l.

410605 Oradea, Șos. Borșului, nr. 45, Romania
Phone: +40-259-465-456, Fax: +40-259-435-134
E-mail: masterplast@masterplastsrl.ro

Î.C.S. MASTERPLAST CONSTRUCT S.R.L.

2019, șos. Muncești, nr.799/3, Chișinău,
Republica Moldova
Phone / Fax: +373-22-524-148
Phone: +373-69-314-042
E-mail: infomoldova@masterplastsrl.ro

MASTERPLAST YU d.o.o.

24000 Subotica, Bodrogvari Ferenc 172, Serbia
Phone: +381- 24-625-825 Fax: +381-24-625-804
E-mail: office@masterplast.rs

MASTERPLAST d.o.o.

31304 Duboševica,
Trg Hrvatske Mladeži 2, Croatia
Phone: +385-31-736-512; Fax: +38-5-31-736-513
E-mail: masterplast@masterplast.hr

MASTER PLAST s.r.o

925 21 Sládkovičovo, Veľkouľfanská cesta
1339, Slovakia
Phone: +421-31-784-2181
Fax: +421-31-784-2180
E-mail: masterplast@masterplast.sk

MASTER PLAST PLUS s.r.o.

19600 Praha 9-Trebořadice, Za tratí 197,
Czech Republic
Phone: +42-0-286-850-565,
Fax: +42-0-286-850-386
E-mail: info@masterplast.cz

MASTERPLAST SP. z o.o.

Ul. Kolejowa 23, 62-090 Rokietnica, Poland
Phone: +48-61-896-35-58/59; +48-61-816-19-97;
Fax: +48-61-814-11-79
E-mail: info@masterplastgroup.pl

MASTERPLAST Deutschland

Produktions- und Vertriebs GmbH
39114 Magdeburg, Breite Str. 6f, Germany
04519 Rackwitz, Kömmlitzer Str. 13, Germany
Phone: +49-0-34294-84662
Fax: +49-0-34294-84663
E-mail: info@masterplastgroup.de

MASTERPLAST Ukraina T.O.B.

88000 Uzhgorod, Pavlovich u.5., Ukraine
Phone / Fax: +380-312-656093; +380-312-
656073
E-mail: info@masterplast.uz.ua

MASTERPLAST Bulgaria EOOD

1532 Sofia, MSK Kazichene, Bulgaria
Phone / Fax: +359-2-978-9791; +359-2-978-
9764
E-mail: office@masterplast.bg

DoO MASTERPLAST

6250, Kičevo, 11 Septemvri 43, Macedonia
Phone: +389-45-223-766;
Fax: +389-45-224-804
E-mail: office@masterplast.com.mk

MASTERPLAST KO SHPK

10000 Pristina, Rr. Drini i bardh , Kosovo
Phone: +377-44-250-877; +381-63-555-074
E-mail: office@masterplast.ko

d.o.o. MASTERPLAST MONT

85000 Bar, Jovana Tomaševića G-9,
Montenegro
Phone: +382-85-353-544; +382-69-657-131;
Fax: +382-85-353-544
E-mail: masterplast-mont@cg.yu

MASTERPLAST ÖSTERREICH

Produktions- & Vertriebs GmbH
3021 Pressbaum, Hauptstraße 119-5/4,
Austria
Phone/ Fax: +43-0-2233-52244
Mobile: +43-(0)676 - 710 80 82
E-mail: info@masterplast.at

MASTERPLAST ALB Sh.p.k

Tirane Llagja Ali Demi Kruga
Shemsije Haka, Albania
E-mail: office@masterplast.al

MASTERPLAST IGMIN D.O.O.

78000 Banja Luka, Tunjice bb.,
Bosna i Hercegovina
Phone: +387-51-386-486,
+387-51-386-437
Fax: +387-51-388-966
E-mail: office@masterplastigmin.com

MASTERPLAST China

200433 Shanghai, Rm 1305,
No. 2158 Siping Road,
Fuqing Guoding Building,
Yangpu District, China
Phone: +86 21 5506 2799
Phone/Fax: +86 21 55063899
E-mail: info@masterplast.cn